

# IPPC-8151S

## 15" XGA TFT LCD Celeron® M Fanless Industrial Panel PC with Stainless Steel



### Features

- 316L stainless steel and food-safe sealing materials
- Robust and fanless design for reliable operation
- Anti-corrosive and chemical resistant touchscreen
- Designed with NEMA4X (IP66) dustproof and waterproof protection
- 15" XGA TFT LCD with chemical resistant touchscreen
- Supports Intel® Celeron® M 1 GHz/1 MB L2 processor with 1 GB memory
- Dual Gigabit Ethernet ports for control & monitoring
- Supports rich I/O and PCI slots
- Supports VESA/panel/stand/desk/wall/ and ceiling mounting (optional)
- All-around IP66 protection with enclosure kit (optional)
- Supports I/O connectors with IP66 protection (optional)

### Introduction

To satisfy the stringent standards required in food, beverage, clinical, chemical or pharmaceutical applications, Advantech offers the IPPC-8151S designed with 316L stainless steel, food-safe sealing materials and an anti-corrosive and chemical resistant touchscreen. Its fanless design and NEMA4X/IP66 waterproof and dustproof protection can ensure reliable operation in most hazardous environments. With the optional enclosure kit and IP66 I/O connector kit, IPPC-8151S can provide a fully enclosed IP66 protection for all sides. In addition to the standard panel mounting, IPPC-8151S can be VESA mounted with an optional enclosure kit. Also, if desk, wall or ceiling mounting is required, an optional stand kit that provides full 360° rotation can be ordered along with the enclosure kit.

### Specifications

#### General

- **BIOS** Award 4MB Flash BIOS
- **Certifications** UL, CE, FCC Class A, CCC, BSMI
- **Enclosure** Fanless with 316L stainless steel
- **Dimensions (W x H x D)** 400.00 x 313.6 x 90.44 mm (15.75" x 12.35" x 3.55")
- **OS Support** Windows 2000, XP Professional and WinXPe
- **Power Input** 10 ~ 30 V<sub>DC</sub>, 18A
- **Power Output** +3.3 V @ 8 A, +5 V @ 10 A, -12 V @ 4 A, +5 Vsb @ 0.75 A, -12 V @ 1 A
- **Power Supply** 85 W
- **Weight (Gross)** 12 Kg (26.45 lbs)

#### System Hardware

- **CPU** Intel Celeron M 1.06GHz 1MB L2 on board
- **Chipset** Intel 945GME
- **Memory** 1GB SO-DIMM DDR2 200pin 667MHz (Supports 4GB Maximum)
- **LAN** 10/100/1000Base-T Ethernet x 2
- **Expansion** 1 x half-length PCI Slot
- **Storage** 1 x CompactFlash Slot, 1 x SATA HDD interface (2.5" HDD bay)
- **I/Os** 3 x RS-232, 4 x USB 2.0, 2 x PS2 (Keyboard, Mouse), 1 x VGA Port, Mic-in, Line-in, Line-out

#### LCD Display

- **Backlight Life** 50,000 hrs
- **Contrast Ratio** 700:1
- **Display Size** 15"
- **Display Type** XGA TFT LCD
- **Luminance** 350 cd/m<sup>2</sup>
- **Max. Colors** 262,144
- **Max. Resolution** 1024 x 768
- **Viewing Angle (H/V°)** 140/125

#### Touchscreen

- **Lifespan** 10 millions times touch at single point
- **Light Transmission** >80%
- **Type** Analog resistive 5-wire

#### Environment

- **Humidity** 5 ~ 85% @ 40° C (non-condensing)
- **Ingress Protection** Front panel: NEMA 4X / IP66
- **Operating Temperature** 0 ~ 50° C (32 ~ 122° F)
- **Storage Temperature** -20 ~ 60° C (-4 ~ 140° F)
- **Vibration Protection** 5 ~ 500 Hz, 1Grms random vibration

### Ordering Information

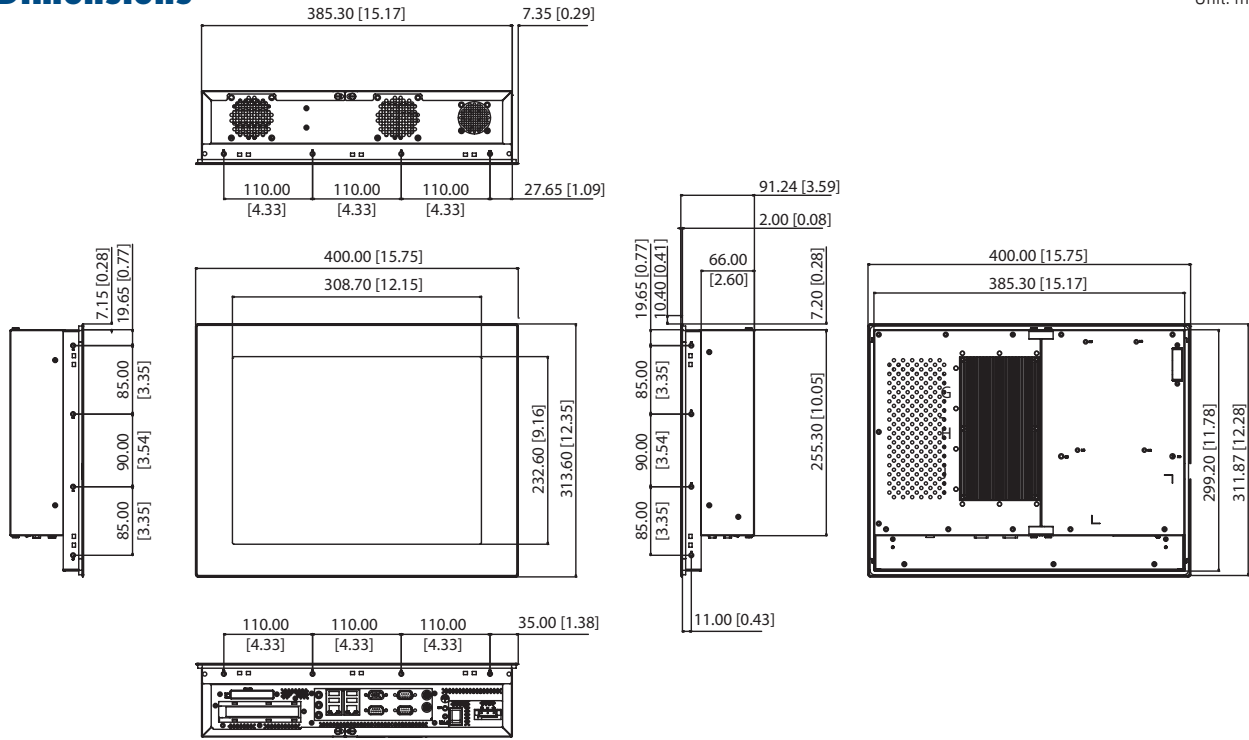
- **IPPC-8151S-ROAE** 15" Stainless Panel PC, Celeron M, 1GHz, TS

#### Accessories

- **IPPC-8151S-EMKE** IPPC-8151S all-around IP66 enclosure kit
- **IPPC-8151S-SMKE** IPPC-8151S kit for desk, wall and ceiling mounting
- **IPPC-8151S-IMKE** IPPC-8151S IP66 I/O connector kit

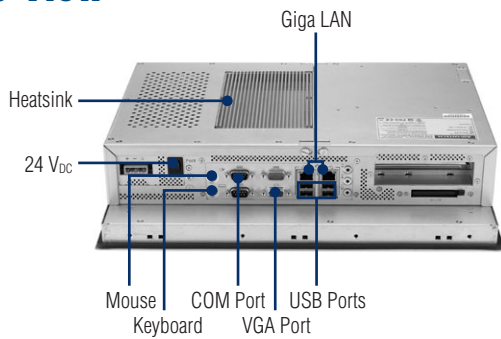
## Dimensions

Unit: mm

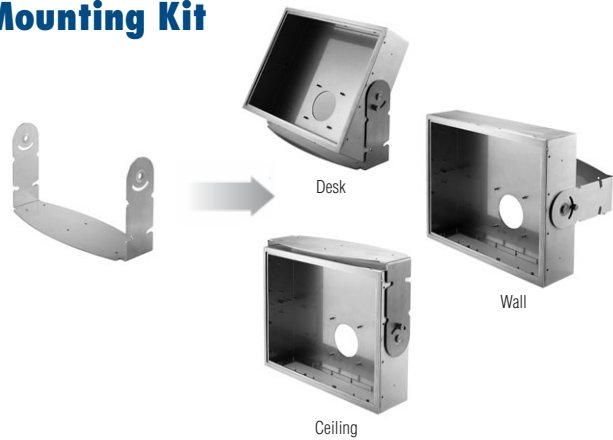


Panel Cut-out Dimension: 388 x 301.5 mm

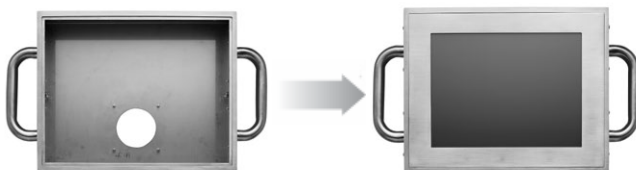
## I/O View



## Mounting Kit



## All-around IP66 Enclosure Kit



## I/O Connector Kit

