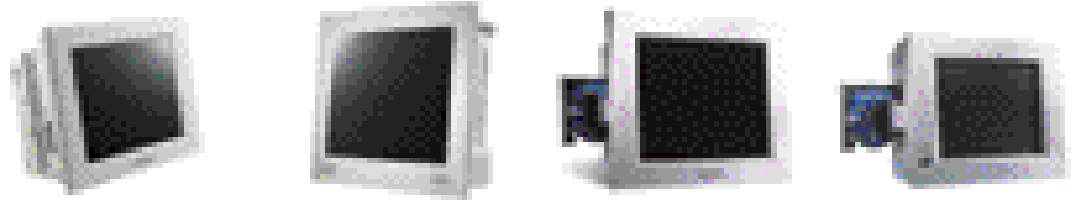
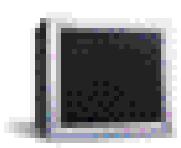
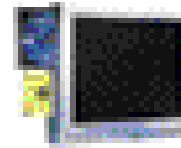
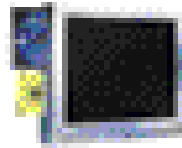
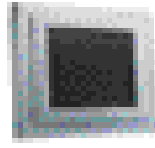
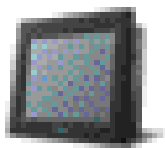
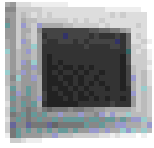


# Selection Guide PPC



Specifications		PPC-154T	PPC-174T	PPC-153T	PPC-123T
<b>CPU Board</b>		PCM-9683	PCM-9680	PCM-9672	PCM-9672
<b>Processor</b>		Socket 478 Intel® Pentium® 4 CPU up to 3.06 GHz	Socket 478 Intel® Pentium® 4 CPU up to 3.06 GHz	Socket 370 Pentium® III & Celeron™ CPU up to 1.26 GHz	Socket 370 Pentium® III & Celeron™ CPU up to 1.26 GHz
<b>Memory</b>	Size	128 MB ~2GB DDR SDRAM	128 MB ~2GB DDR SDRAM	32 MB - 1 GB SDRAM	32 MB - 1 GB SDRAM
	Module Type	184 pin DIMM x 2	184 pin DIMM x 2	168 pin DIMM x 2	168 pin DIMM x 2
<b>2nd Cache Memory</b>		On-die 512 KB	On-die 512 KB	On-die 256 KB or 512 KB	On-die 256 KB or 512 KB
<b>SSD/Type</b>		Optional 6-in-1 Card reader (MS, SD, SM, MC, ad CF type 1/II sockets)	Optional 6-in-1 Card reader (MS, SD, SM, MC, ad CF type 1/II sockets)	N/A	N/A
<b>Display</b>	Size/Type	15" TFT LCD	17" TFT LCD	15" TFT LCD	12.1" TFT LCD
	Max. Resolution	1024 x 768	1280 x 1024	1024 x 768	800 x 600
	Max. Colors	256 K or above	256 K or above	256 K or above	256 K or above
	Pixel Pitch (mm)	0.297 x 0.297	0.264 x 0.264	0.297 x 0.297	0.31 x 0.31
	Brightness (cd/m <sup>2</sup> )	250	260	250	300
	Viewing Angle	120° C	160° C	120° C	90° C
	Brightness Control	Yes	Yes	Yes	Yes
	Simultaneous Mode	Yes	Yes	Yes	Yes
	LCD Lifetime	50,000 hrs.	50,000 hrs.	50,000 hrs.	50,000 hrs.
Backlight MTBF	25,000 hrs.	25,000 hrs.	25,000 hrs.	25,000 hrs.	
<b>VGA</b>	Chipset	Intel® 845GV	Intel® 845GV	VIA 8606 (Twister)	VIA 8606 (Twister)
	VRAM	32 ~64 MB (DVMT)	32 ~64 MB (DVMT)	8~32 MB (SMA)	8~32 MB (SMA)
<b>HDD/Type</b>		One 2.5" drive	One 3.5" drive	One 2.5" drive	One 2.5" drive
<b>FDD/Type</b>		One built-in 3.5" drive	One built-in 3.5" drive	One built-in 3.5" drive	One built-in 3.5" drive
<b>PCMCIA Slot</b>		Support Type II x 2 or Type III x 1	Support Type II x 2 or Type III x 1	Support Type II x 2 or Type III x 1	Support Type II x 2 or Type III x 1
<b>CD-ROM Drive</b>		One built-in drive, 24x or above	One built-in drive, 24x or above	One built-in drive, 24X or above	One built-in drive, 24X or above
<b>DVD-ROM Drive Option</b>		Yes	Yes	Yes	Yes
<b>I/O Port</b>		2 COM ports, 1 parallel port, 4 USB ports (V 2.0), PS/2 mouse & K/B, Micin/Line-in/Line-out, VGA port, S-Video port, 2 IEEE 1394 ports	3 COM ports, 1 parallel port, 4 USB ports (V 2.0), PS/2 mouse & K/B, Mic-in/Line-in/Line-out, VGA port, S-Video port	4 COM ports, 1 parallel port, 2 USB, PS/2 mouse & K/B, Mic-in/Line-in/Line-out, VGA port, game port	4 COM ports, 1 parallel port, 2 USB, PS/2 mouse & K/B, Mic-in/Line-in/Line-out, VGA port, game port
<b>Bus Expansion</b>		One PCI Slot	2 PCI slots	One PCI/ISA slot	One PCI/ISA slot
<b>Network (LAN)</b>		10/100Base-T Ethernet (gigabit Optional)	10/100Base-T Ethernet (gigabit Optional)	10/100Base-T Ethernet	10/100Base-T Ethernet
<b>IrDA Transmission</b>		N/A	N/A	N/A	Yes
<b>Power</b>	Output Rating	180 W	180 W	80W / 74W	80W / 74W
	Input Voltage	(100-240 V <sub>AC</sub> @ 50 ~60 Hz)	(100-240 V <sub>AC</sub> @ 50 ~60 Hz)	(100-250V <sub>AC</sub> @ 50-60 Hz) ; 12/24/48 V <sub>DC</sub>	(100-250 V <sub>AC</sub> @ 50-60 Hz) ; 12/24/48 V <sub>DC</sub>
<b>Touchscreen</b>	Technology	Analog resistive / Capacitive / SAW	Analog resistive / Capacitive / SAW	Analog resistive / Capacitive / SAW	Analog resistive / Capacitive / SAW
	Control Port	USB	RS-232 (COM4)	RS-232 (COM 4)	RS-232 (COM 4)
	Light Transmission	75% (Resistive)/85% (Capacitive)/ 91% (SAW)	75% (Resistive)/ 85% (Capacitive)/ 91% (SAW)	75% (Resistive) / 85% (Capacitive) / 91% (SAW)	75% (Resistive) / 85% (Capacitive)
	OS Support	Windows® 95/98/ME/2000/XP, DOS	Windows® 95/98/ME/2000/XP, DOS	Windows® 95 / 98 / ME / NT / 2000 / XP, DOS	Windows® 95 / 98 / ME / NT / 2000 / XP, DOS
	Touch Life Cycle	30 million (Resistive)/20 million (Capacitive)/50 million (SAW)	1 million (Resistive)/20 million (Capacitive)/50 million (SAW)	30 million (Resistive) / 20 million (Capacitive) / 50 million (SAW)	30 million (Resistive) / 20 million (Capacitive)
<b>Watchdog Timer</b>		62-level, 1 to 62 seconds	62-level, 1 to 62 seconds	62-level, 1 to 62 seconds	62-level, 1 to 62 seconds
<b>Working Temperature</b>		0 - 45° C (32 - 113° F)	0 - 45° C (32 - 113° F)	0 - 45° C (32 - 113° F)	0 - 45° C (32 - 113° F)
<b>Front Panel Protection</b>		NEMA 4/IP65 compliant (systems with SAW T/S excluded)	NEMA 4/IP65 compliant (systems with SAW T/S excluded)	NEMA 4 / IP65 compliant (systems with SAW T/S excluded)	NEMA 4 / IP65 compliant
<b>Certificate</b>		BSMI, VCCI, UL, CE, FCC Class B, CSA	BSMI, VCCI, UL, CE, FCC Class B, CSA	BSMI, VCCI, UL, CE, FCC Class B, CSA, CCC	BSMI, VCCI, UL, CE, FCC Class B, CSA, CCC
<b>Dimensions (W x H x D)</b>		420 x 223.3 x 130.5 mm (16.54" x 12.72" x 5.12")	446 x 382 x 127 mm (17.56" x 15.04" x 5")	420 x 323 x 106 mm (16.54" x 12.72" x 4.17")	375 x 285.5 x 104.4 mm (14.76" x 11.24" x 4.11")
<b>Weight</b>		7 KG (15.4 lbs)	10.5 KG (23 lbs)	6.5 kg (14.3 lbs)	5.2 kg (11.5 lbs)



PPC-103T	PPC-L126T	PPC-105T	PPC-S154T	PPC-S153T	PPC-S123T
PCM-9573	PCM-9671	PCM-5821	PCM-9681	PCM-9670	PCM-9573
Socket 370 Pentium® III & Celeron™ CPU to 850 MHz	VIA Eden 667 MHz on board	AMD Geode GX1 300 MHz	Socket 478 Mobile Intel® Pentium® 4 Processor-M CPU up to 2.2 G (built-in 1.7 GHz)	Socket 370 Pentium® III & Celeron™ CPU to 1 GHz	Socket 370 Pentium® III & Celeron™ CPU to 850 MHz
32 - 512 MB SDRAM	32 MB - 1 GB SDRAM	16 - 128 MB SDRAM	64~1 GB DDR SDRAM (standard is built-in 256 MB)	32 MB - 1 GB SDRAM	32 - 512 MB SDRAM
144 pin SODIMM x 2	168 pin DIMM x 2	144 pin SODIMM x 1	200 pin SODIMM x2	144 pin SODIMM x 2	144 pin DIMM x 2
On-die 256 KB	On-die 64 KB	On-die 16 KB	On-die 512 KB	On-die 256 KB	On-die 256 KB
Supports 1 internal CompactFlash™ Type I socket	Support 1 internal CompachFlash Type II socket	Supports 1 internal CompactFlash Type I socket	Support 1 internal CompactFlash Type II socket	Supports 1 internal CompactFlash Type II socket	Supports 1 internal CompactFlash Type I socket
10.4" TFT LCD	12.1" TFT LCD	10" TFT LCD	15" TFT-LCD	15" TFT LCD	12.1" TFT LCD
800 x 600	800 x 600	800 x 600	1024 x 768	1024 x 768	800 x 600
256 K or above	256 K or above	256 K or above	256K or above	256 K or above	256 K or above
0.26 x 0.26	0.31 x 0.31	0.25 x 0.25	0.297 x 0.297	0.297 x 0.297	0.31 x 0.31
250	200	170	250	250	300
90° C	90° C (min)	100° C	120° C	120° C	100° C
Yes	Yes	Yes	Yes	Yes	Yes
Yes	Yes	Yes	Yes	Yes	Yes
50,000 hrs.	50,000 hrs.	50,000 hrs.	50,000 hrs	50,000 hrs.	50,000 hrs.
20,000 hrs.	20,000 hrs.	20,000 hrs.	25,000 hrs	25,000 hrs.	25,000 hrs.
SMI710/SMI721	VIA 8606 (Twister)	AMD CX 5530	Intel® 845GV	SMI721	SMI710/SMI721
4 MB	8~32 MB (SMA)	2~4 MB	32~64 MB (DVMT)	4 MB	4 MB
One 2.5" drive	One 2.5" drive	One 2.5" drive	One 2.5" drive	One 2.5" drive	One 2.5" drive
Support one external FDD connector	N/A	Support one external FDD connector	One built-in 3.5" drive	One built-in 3.5" drive	1 external FDD connector
N/A	N/A	N/A	One built-in 3.5" drive	N/A	N/A
One external IDE connector	One built-in drive, 24X or above	One external IDE connector	One built-in drive, 24X or above	Yes	1 external IDE connector
One external IDE connector	Yes	N/A	Yes	Yes	1 external IDE connector
4 COM ports, 1 parallel port, 2 USB, PS/2 mouse & K/B, VGA port Mic-in/Line-out	4 COM ports, 1 parallel port, 2 USB, PS/2 mouse & K/B, VGA port, Mic-in/Line-in/Line-out	4 COM ports, 1 parallel port, 2 USB, PS/2 mouse & K/B, Mic-in/Line-in/Line-out, VGA port	2 COM ports, 4 USB v2.0 ports, PS/2 mouse & KB, Mic-in/Line-in/Line-out, VGA port, S-Video port for option	2 COM ports, 1 parallel port, 4 USB, PS/2 mouse & K/B, Mic-in/Line-in/Line-out	4 COM ports, 1 parallel port, 2 USB, PS/2 mouse & K/B, Line-in/Line-out
One PCI/ISA slot	One PCI/ISA slot, One MINI PCI socket	One PCI/ISA slot	One MINI PCI Socket	One Mini PCI Socket	One PCI/ISA slot
10/100Base-T Ethernet	10/100Base-T Ethernet	10/100Base-T Ethernet	10/100Base-T Ethernet, Gigabit for option	10/100Base-T Ethernet	10/100Base-T Ethernet
N/A	N/A	N/A	Yes	Yes	N/A
65W / 75W; 60W	60 W	75W/65W; 60W	70W	70 W	60 W
(100-250 V <sub>AC</sub> @ 50-60 Hz) ; 12/24 V <sub>DC</sub>	24V <sub>DC</sub>	100-250 V <sub>AC</sub> /50-60 Hz; 24 V <sub>DC</sub> /12 V <sub>DC</sub>	24V <sub>DC</sub>	24V <sub>DC</sub>	24V <sub>DC</sub>
Analog resistive	Analog resistive	Analog resistive	Resistive	Analog resistive	Analog resistive
RS-232 (COM 4)	RS-232 (COM 4)	RS-232 (COM 4)	RS-232 (COM 4)	PS/2	RS-232 (COM 4)
75%	75%	75%	75%	75%	75%
Windows® 95 / 98 / ME / NT / 2000 / XP, DOS	Windows® 98 / ME / NT 2000 / XP, DOS	Windows® 95 / 98 / ME / NT / DOS	Windows® 95/98/ME/2000/ XP, DOS	Windows® 95 / 98 / ME / NT / 2000, DOS / XP	Windows® 95 / 98 / ME / NT / 2000, DOS / XP
1 million	1 million	30 million	30 million	1 million	1 million
62-level, 1 to 62 seconds	62-level, 1 to 62 seconds	62-level, 1 to 62 seconds	62-level, 1 to 62 seconds	62-level, 1 to 62 seconds	63-level, 1 to 63 seconds
0 - 45° C (32 - 113° F)	0 - 40° C (32 - 104° F)	0 - 40° C (32 - 104° F)	0-45° C (32-113° F)	0 - 45° C (32 - 113° F)	0 - 45° C (32 - 113° F)
NEMA 4 / IP65 compliant	NEMA 4 / IP65 compliant	NEMA 4 / IP65 compliant	NEMA4 / IP 65 compliant	NEMA 4 / IP65 compliant	NEMA 4 / IP65 compliant
VCCI, UL, CE, FCC Class B, CSA, CCC	BSMI, VCCI, UL, CE, FCC Class B, CSA, CCC	UL, CE, FCC Class B, CSA, CCC	UL, CE, FCC Class B, CB, CSA	UL, CE, FCC Class B, CSA	UL, CE, FCC Class B, CSA
342 x 265 x 92.4 mm (13.5" x 10.4" x 3.64")	340.5 x 269.3 x 70.5 mm (13.41" x 10.6" x 2.78")	342 x 265 x 92.4 mm (13.5" x 10.4" x 3.64")	375 x 299 x 49 mm (14.76" x 11.77" x 1.93")	375 x 299 x 49mm (14.76" x 11.77" x 1.93")	311 x 237 x 54.5 mm (12.24" x 9.33" x 2.15")
3.5 kg (7.7 lbs)	3.25 kg (7.15 lbs)	3.2 kg (7.1 lbs)	4.9 kg (10.78 lbs)	4.9 kg (10.78 lbs)	5.2 kg (11.5 lbs)