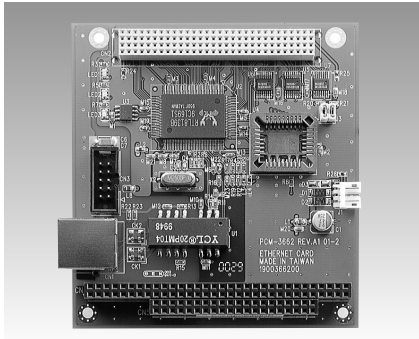


PCM-3662

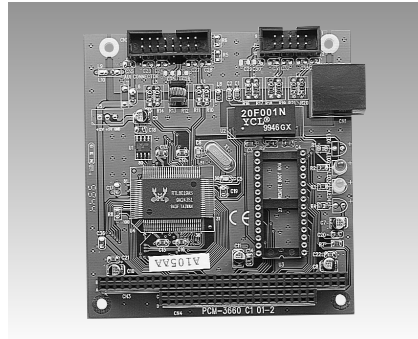
PCM-3660

PC/104-Plus Ethernet Module

Jumperless Ethernet Module



PCM-3662



PCM-3660



Features

- Supports IEEE 802.3u Ethernet standard
- Supports IEEE 802.3x Full Duplex Flow Control
- Supports 10/100 Base-T Ethernet
- Supports Wake-On-LAN function
- Provide 4 modes LED definition

Specifications

Software Driver Support

- Windows 95/98/NT/2000 driver
- Novell server driver
- Windows for workgroups driver
- Unixware 7.0 driver
- WinCE driver for x86 platform
- Novell ODI client driver
- Novell ODI driverfor client32
- Linux driver

General

- **Power** +5 V @ 250 mA
- **Operating Temperature** 0 ~ 70° C
- **Storage Temperature** -15 ~ 80° C
- **Humidity** 10 ~ 90% (operating)

Ordering Information

- **PCM-3662-A** PC/104-plus Ethernet Module

Features

- Automatically detects 8-bit or 16-bit
- AUI connector supports external MAUs
- On-board 32 K byte buffer for multi-package

Specifications

- **I/O Address** 200, 220, 240, 260, 280, 2A0, 2C0, 300, 320, 340, 380, 3A0
- **Interrupt Level** IRQ 3, 4, 5, 9, 10, 11, 12 or 15
- **Boot ROM Address** C0000, C8000, D0000, or D8000H
- **Data Bus** 8-bit, 16-bit, or auto-sending
- **Connector** 16-bit PC/104 stackthrough connector
RJ-45 connector for 10Base-T, 16-pin insulation displacement connector for AU1
- **Standard** IEEE 802.3 10 Mbps CSMA/CD 10Base-T Transceiver
- **Power Consumption** +5 V @ 400 mA max

Ordering Information

- **PCM-3660-C1** Jumperless Ethernet module
- **PCM-3661-A** 10Base-2 transceiver module