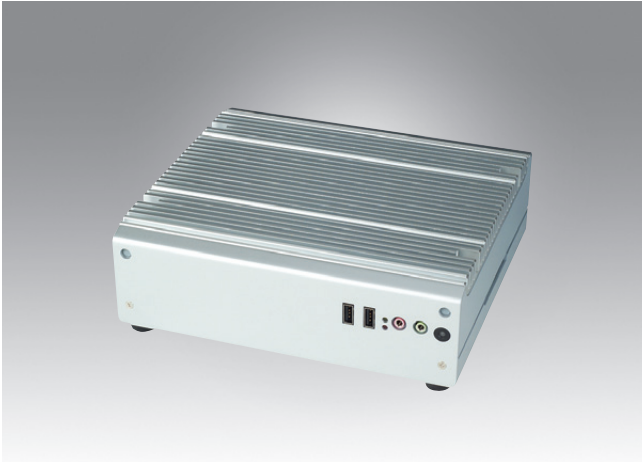


# ARK-3202

## Mobile Intel® Atom™ N270 Fanless Solution with Dual Display and Multiple I/O



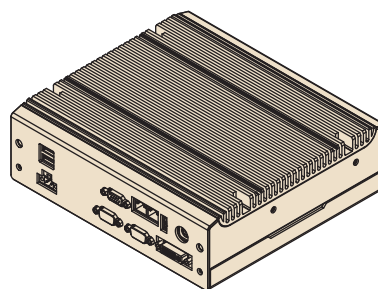
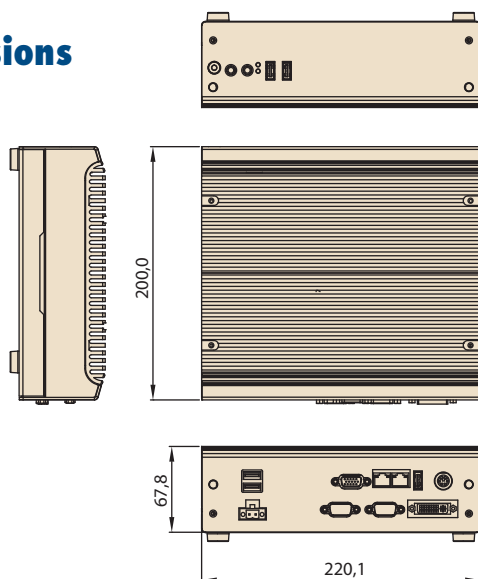
### Features

- Intel® Atom N270 Processor at 1.6 GHz
- Dual display and support for wide screen with high resolution
- Supports 2 GbE, 5 USB 2.0 and max to 5 COMs ports
- Supports two MiniPCle expansion slots and one SIM socket (ARK-3202F only)
- IP40

### Specifications

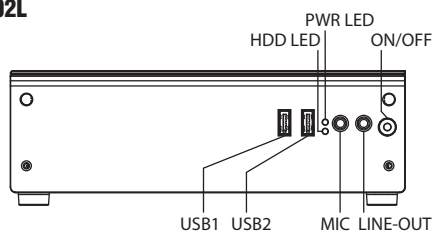
		ARK-3202L-S6A1E	ARK-3202F-S6A1E
Processor System	CPU	Intel Atom N270	
	Max. speed	1.6 GHz	
	System Chipset	Intel 945GSE + ICH7-M Chipset	
	Front Side Bus	400/533MHz	
	BIOS	Award 4 MB SPI BIOS	
Memory	Technology	DDR2 400/533 MHz (945GSE)	
	Max. Capacity	2 GB	
	Socket	1 x 200-pin SODIMM	
Graphics	Chipset	Integrated graphics built in Intel 945GSE	
	Interface	CRT Interface DVI Interface, compliant with DVI 1.0 36-bit LVDS interface(Optional)	DVI (Optional)
Ethernet	LAN 1	10/100/1000 Mbps Ethernet controller, support Wake On LAN	
	LAN 2	10/100/1000 Mbps Ethernet controller, support Wake On LAN	
Audio	Amplifier	2.2W amplifier	
	Interface	Spkr-out, Mic-in	
IO interface	Serial Interface	2 x RS-232 port	2 x RS-232 & 3 x RS-232/422/485 w/ Auto Flow Control
	USB Interface	5 x USB ports, Compliant with USB 2.0	
Other	Digital I/O	-	8-bit DIO (optional)
	Watchdog timer	255-level timer interval, setup by software	
Expansion	Mini PCIe	-	2 x Mini PCIe
Storage	HDD	1 x SATA 2.5" HDD (support 9.5mm height only)	1x SATA 2.5" HDD (support 9.5 mm height only)
	SSD	Supports CompactFlash socket for type I/II CompactFlash disk	
Software Support	Microsoft Windows	Vista, XP Professional, XP Embedded	
	Linux	Fedora 9.0	
Power Requirement	Power Type	AT/ATX	
	Power Input Voltage	12 V <sub>DC</sub> ~ 24 V <sub>DC</sub>	
	Minimum Power Input	12V-24V, 3.0A-1.5A	
	Power Adapter	AC to DC, DC19V/3.42A, 65W (Optional)	
Power Consumption	Typical	Typical 13.3W (CPU is Intel Atom N270 1.6 GHz and w/o expansion)	
	Max.	Max. 17.1W (CPU is Intel Atom N270 1.6 GHz and w/o expansion)	
Mechanical	Construction	Aluminum housing	
	Mounting	Desk/wall-mounting	
	Dimensions (W x H x D)	220 mm x 68 mm x 200 mm (8.66" x 2.67" x 7.87")	
	Weight	3 kg (6.6 lb)	
Environment	Operating Temperature	With Industrial Grade CompactFlash disk: -20 ~ 60° C (-4 ~ 140° F) With 2.5-inch extended temperature hard disk 0 to 45° C (32 ~ 112° F), with air flow	
	Storage Temperature	-40 ~ 85° C (-40 ~ 185° F)	
	Relative Humidity	95% @ 40° C (non-condensing)	
	Vibration Loading During Operation	With CompactFlash disk: 5 Grms, IEC 60068-2-64, random, 5 ~ 500 Hz, 1 Oct./min, 1 hr/axis. With 2.5-inch hard disk: 1 Grms, IEC 60068-2-64, random, 5 ~ 500 Hz, 1 Oct./min, 1 hr/axis.	
	Shock During Operation	With CompactFlash disk: 50 G, IEC 60068-2-27, half sine, 11 ms duration With hard disk: 20 G, IEC 60068-2-27, half sine, 11 ms duration	
	EMC	CE/FCC Class A, CCC, BSMI	
	Safety Certifications	UL, CCC, BSMI	

## Dimensions

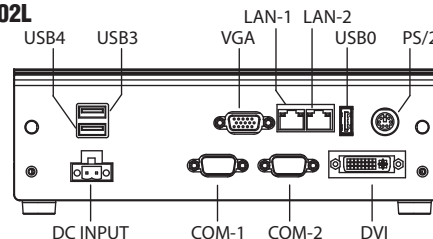


Unit: mm (inch)

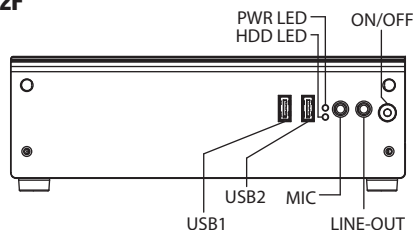
### Front Panel External I/O Mechanical Layout/Drawing ARK-3202L



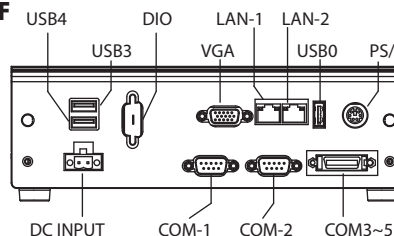
### Rear Panel External I/O Mechanical Layout/Drawing ARK-3202L



### Front Panel External I/O Mechanical Layout/Drawing ARK-3202F



### Rear Panel External I/O Mechanical Layout/Drawing ARK-3202F



## Packing List

Part Number	Description
-	1 x ARK-3202 Unit
-	1 x Driver/Utility CD/Manual
-	1 x User Manual (Simplified Chinese)
1960014487T00C	2 x Desk/Wall mount plate
1700009001	1 x 2-pin Phoenix DC power connector
1700018308	M. Cable SCSI 26P(M)/D-SUB 9P(M)X3 COM, 10CM (available for ARK-3202F)

## Ordering Information

Part Number	Description
ARK-3202F-S6A1E	Intel Atom N270 1.6 GHz Compact Embedded Box IPC, w/ 2 x GbE, 5 x USB 2.0, 5 x COM, 2 x Mini PCIe, VGA, Audio
ARK-3202L-S6A1E	Intel Atom N270 1.6 GHz Compact Embedded Box IPC, w/ 2 x GbE, 5 x USB 2.0, 2 x COM, VGA, DVI, Audio

## Optional Items

Part Number	Description
1757003659	AC-to-DC Adapter, DC19 V/3.42A 65W, with Phoenix Power Plug, 0 ~ 40° C for Home and Office Use
1700001947	Power cable 2-pin 180 cm, USA for ARK-338X
1700001948	Power cable 2-pin 180 cm, Europe for ARK-338X
1700001949	Power cable 2-pin 180 cm, UK for ARK-338X
1700009398	LVDS power cable for ARK-3202L
1700060202	PS2 Y type for KB/MS cable
1700018855	DIO cable, DB-9, for ARK-3202

## Embedded OS

Part Number	Description
2070009503	WES 2009 ENG/FR/GE/IT/SP
2070009504	WES 2009 ENG/CHT/CHS/JPN
2070010050	Win CE 6.0 Pro
2070010673	WES7 SP1 ENG