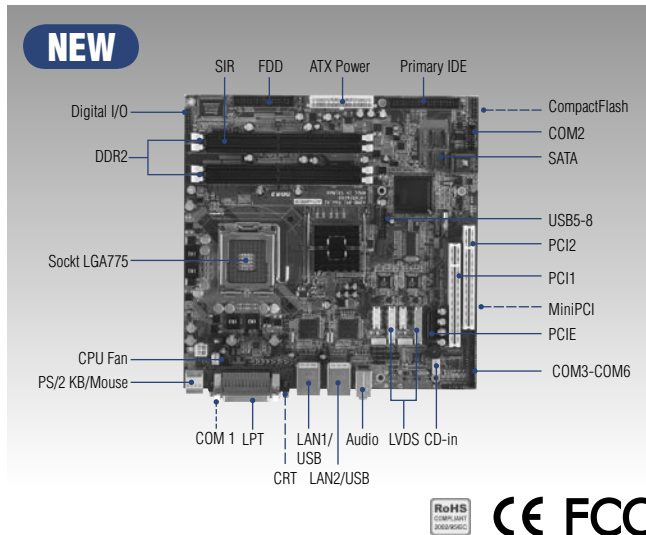


AIMB-341

Socket 775 EmbeddedATX SBC
w/ DVI, Audio, SATA, USB



Features

- Supports LGA 775 Pentium® 4/ Celeron® D processors
- Intel® 915 GV chipset 533/800 FSB
- Supports Dual Channel DDR2 533 up to 4 GB
- Dual Display Function support CRT + DVI
- Supports 8 USB 2.0 ports
- 6 COM ports
- Supports 4 Serial ATA devices

Specifications

General

- **CPU** Socket LGA 775 Support LGA775 Pentium 4 (670) up to 3.8 GHz/ Celeron D (355) up to 3.4 GHz
- **2nd Cache Memory** Celeron D: 256 KB/Pentium 4 : 512 KB
- **System Chipset** Intel 915GV/ICH6 chipset
- **BIOS** AWARD® 4 Mbit Flash BIOS
- **System Memory** 2 x DDR2 DIMM, Max. 4 G
- **Power Management** APM 1.2
- **SSD** CompactFlash® Card support
- **Watchdog Timer** 255 levels, System reset
- **Expansion Interface** 1 x PCI (for EmbATX), 1 x PCI (for MicroATX)
1 x miniPCI
- **Battery** Lithium 3 V/220 mA

I/O

- **I/O Interface** 2 x EIDE (40-pin Ultra DMA 66 & 100 and 44-pin Ultra DMA 33), 1 x K/B, 1 x mouse, 1 x RS-232/422/485, 5 x RS-232, 1 x LPT, 1 x FDD
- **USB** 8 x USB 2.0
- **Audio** Supports Mic-in, Line-in, CD audio in, Line-out
- **IrDA** 115.2 kbps, IrDA 1.0 compliant
- **GPIO** 4 TTL digital out, 4 TTL digital in

Ethernet

- **Chipset** Boardcom® 5721
- **Speed** 1000Base-T
- **Interface** 2 x RJ45
- **Standard** IEEE 802.3, IEEE 802.3u, IEEE 802.3 z/ab (optional)

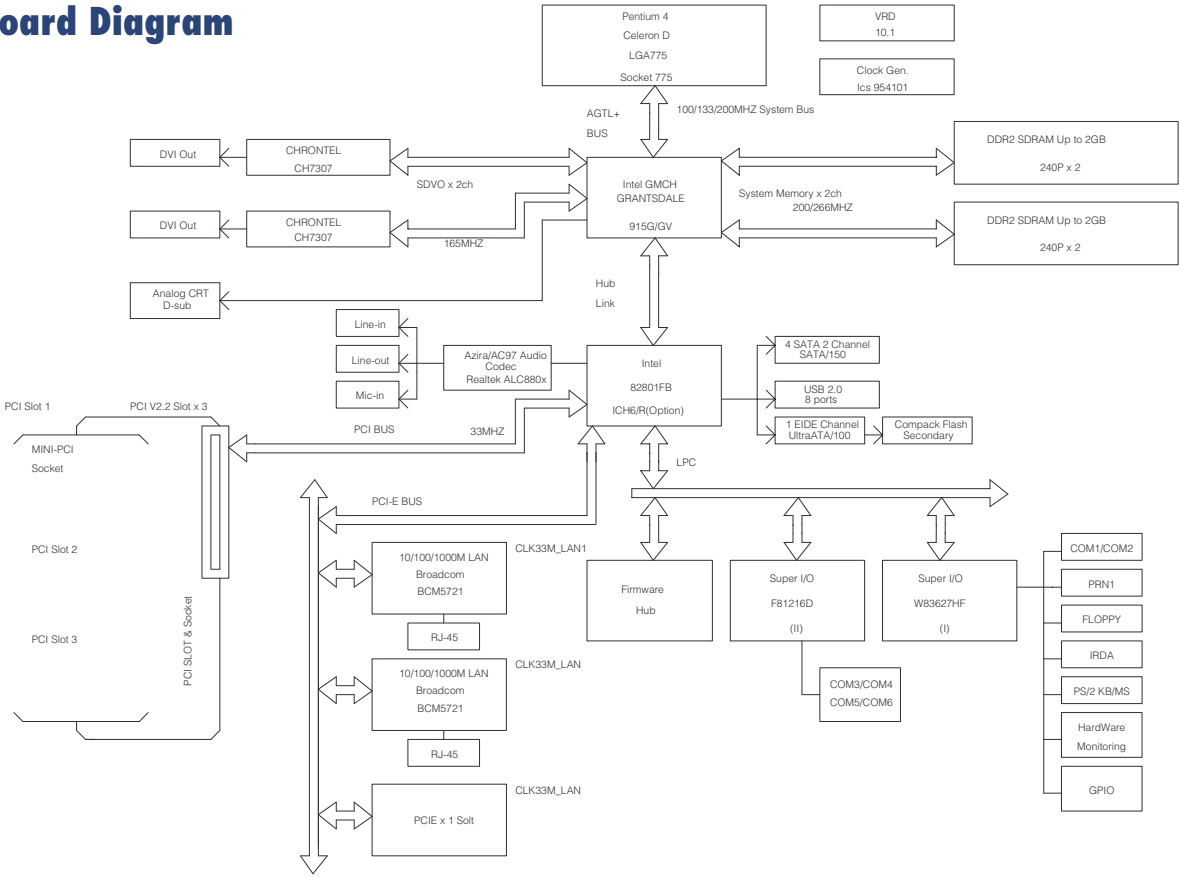
Display

- **Chipset** 915 GV
- **Memory Size** Intel Direct Memory Execution model to use system memory
- **Resolution** CRT mode:
up to 2048 x 1536 with 32-bit @ 85 Hz
LCD mode:
Support 2 channel 18/24 bit LVDS panel
Dual LVDS panel support up to UXGA (1600 x 1200) panel.
Dual Display resolution with frequency range form 25 MHz to 112 MHz

Mechanical and Environmental

- **Dimension (L x W)** 244 x 244 mm (9.6" x 9.6")
- **Weight** 0.8 kg (weight of total package)
- **Operating Temperature** 0 ~ 60° C (32 ~ 140° F), operation
- **Operating Humidity** Operating Humidity 0% ~ 90% relative humidity, noncondensing
- **Power Supply Voltage:** +5 V ±5 %, +12 V ±5 %, -12 V ±5 %

Board Diagram



Packing List

- 1 x AIMB-341 SBC
- 1 x Primary IDE cable (p/n: 1701400452)
- 1 x Secondary IDE cable (p/n: 1701440350)
- 1 x COM port cable (p/n: 1701140201)
- 1 x COM3-6 cable (p/n: 1701400181)
- 1 x I/O Shield (p/n: 1960001955)
- 1 x Jumper pack (p/n: 9689000068)
- 1 x Startup Manual
- 1 x Utility CD

Optional Accessories

- FDD cable (p/n: 1700340640)
- 2 SATA HDD data cable (p/n: 1700071000)
- 2 SATA HDD power cable (p/n: 1703150102)
- USB cable (p/n: 1700000719)

Ordering Information

Standard	DVI	TV out	Giga	SATA	USB	RS-232	RS-232/422/485	GPIO	LPT	CF	miniPCI	PCI
AIMB-341F-00A1E	Yes	-	2	4	8	5	1	4 in, 4 out	1	Yes	Yes	2